



# Overview

- **4 - BLOCK OF G+5**
- **Land area – 1 acres**
- **Total flat -140**
- **1 BHK -788 sq.ft**
- **2 BHK = 742 to 1018 sq.ft**
- **3 BHK = 972 - 1258 sq.ft**
- **Total shop -10**
- **Size- 110 sq.ft. - 474 sq.ft.**

# Location Map







# Features

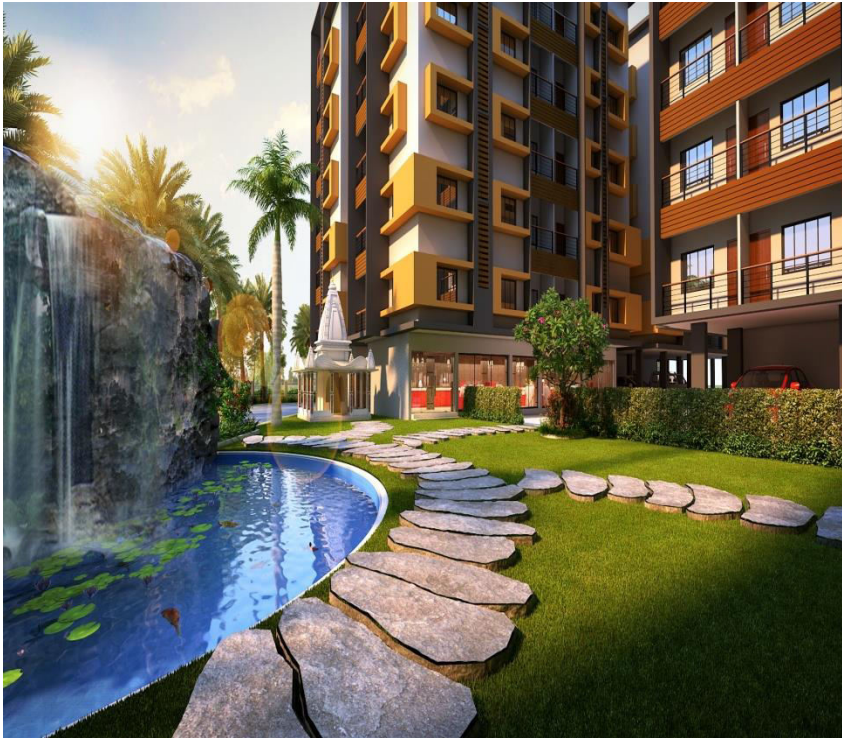


- 40% Open Space
- Adequate car (Open & Covered) parking for residents.
- Lift Facility
- Road and Street Lighting all around the Complex.
- Fire Fighting System (As per Norms)
- Separate common toilets for maid & servant in ground floor.
- 24 x 7 hours water supply.

**9830788000**



# Amenities



- Temple
- A.C Gymnasium
- A.C Community Hall
- A.C Club Room
- Fountain & Garden
- Children's Play Area
- Intercom Facility
- Hi-Tech Security System
- Generator Back-up\*

**9830788000**

# Specification

Flooring	Vitrified Tiles in all floor area of the flats
Stairs	Marbel/Granite tiles in staircase,lobby and common areas
Doors	Flush doors with accessories
Windows	Aluminium powder coated/UPVC windows
Kitchen	Dado of ceramic tiles. Marble/Granite platform
Toilet	Concealed pipeline using standard material. Ceramic tiles dado. Tiles flooring. CP fitting of superior brands.
Elevators	Semi-Autometric lifts of a leading brand in each block.
Electrical	Concealed copper wiring. Sufficient light and power points. Television points in living / dining and all bedrooms. Telephone points in living / dining room.

**9830788000**

# Site Plan



**9830788000**



# Isometric View

Isometric view 2BHK



Isometric view 3BHK

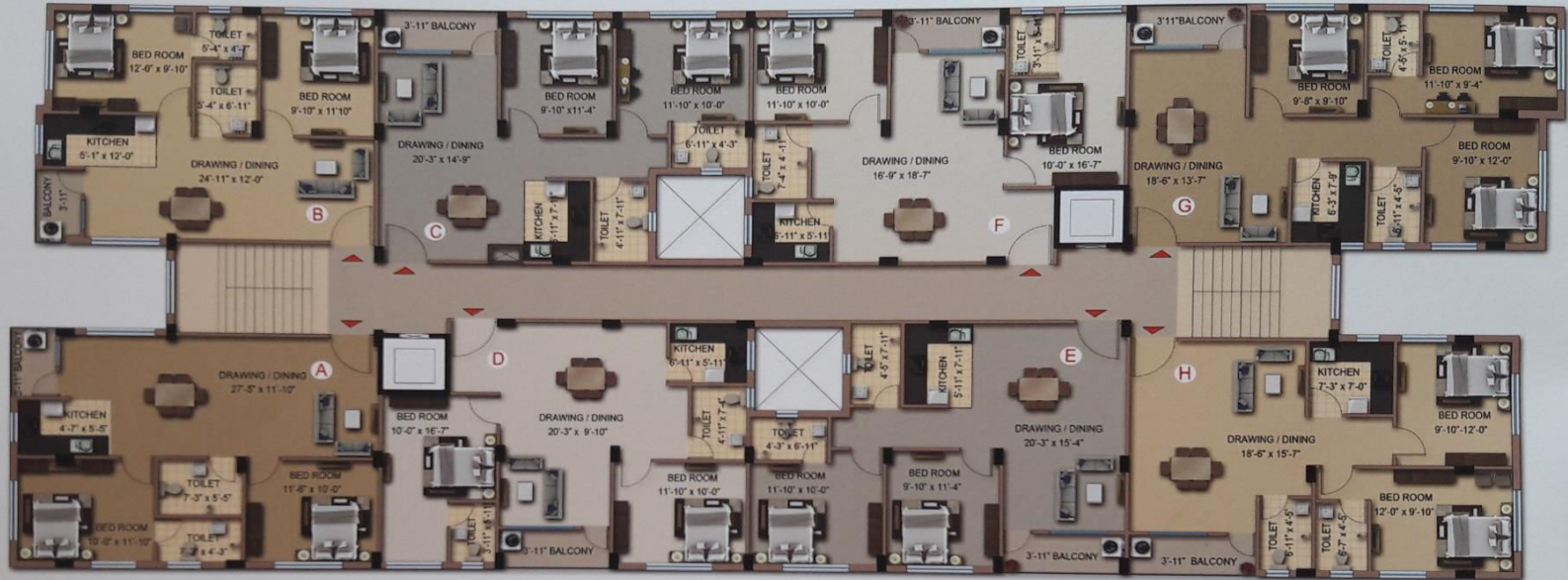


**9830788000**



# BLOCK A

## BLOCK A



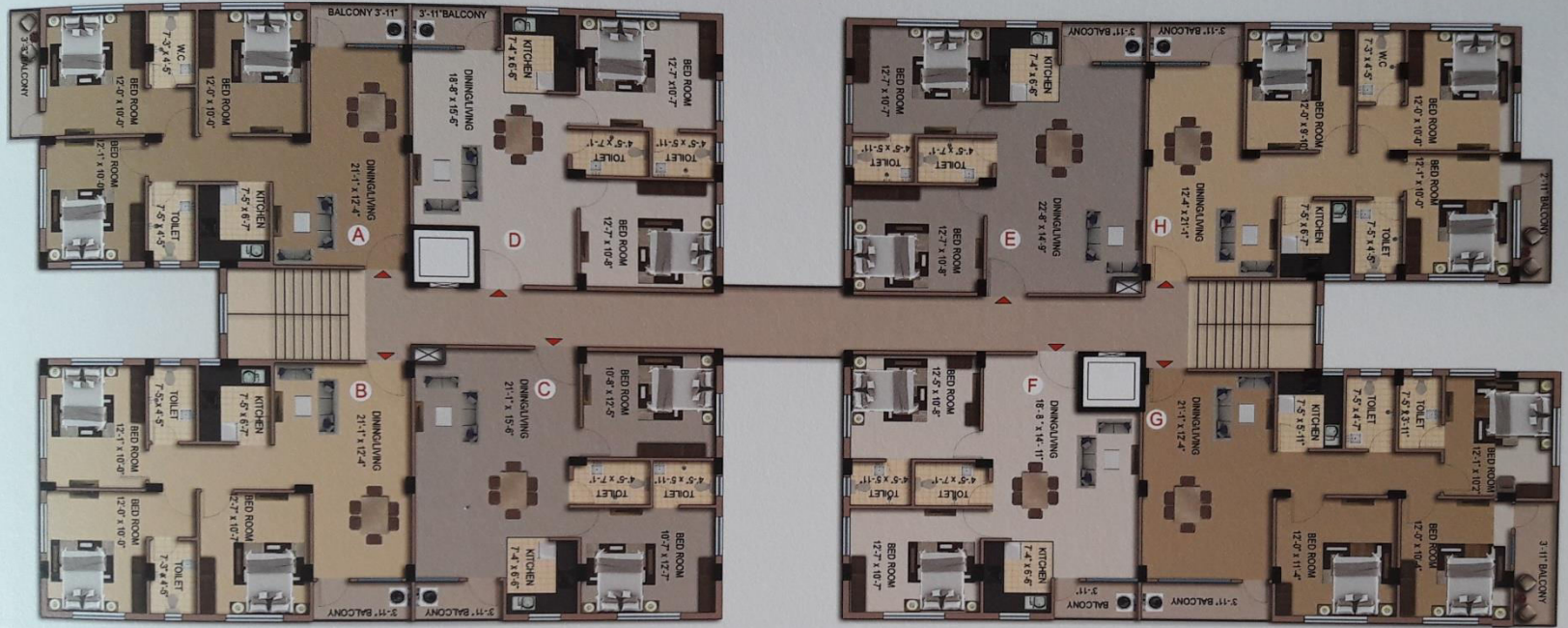
Flat Type	Unit Type	Saleable Area in Sq.Ft.	Build Up Area in Sq.Ft.	Balcony Carpet Are in Sq.Ft.	Carpet Are in Sq.Ft.
A	2BHK	932	745	26	668
B	2BHK	844	676	27	603
C	2BHK	931	745	41	658
D	2BHK	969	776	38	693
E	2BHK	936	749	41	663
F	2BHK	964	772	38	689
G	3BHK	1069	855	38	759
H	2BHK	974	779	43	687



**9830788000**

# BLOCK B

## BLOCK B



Flat Type	Unit Type	Saleable Area in Sq.Ft.	Build Up Area in Sq.Ft.	Balcony Carpet Are in Sq.Ft.	Carpet Are in Sq.Ft.
A	3BHK	1180	944	77	814
B	3BHK	1127	901	35	807
C	2BHK	966	773	31	697
D	2BHK	933	746	31	667
E	2BHK	965	772	31	696
F	2BHK	933	746	31	667
G	3BHK	1258	1007	100	856

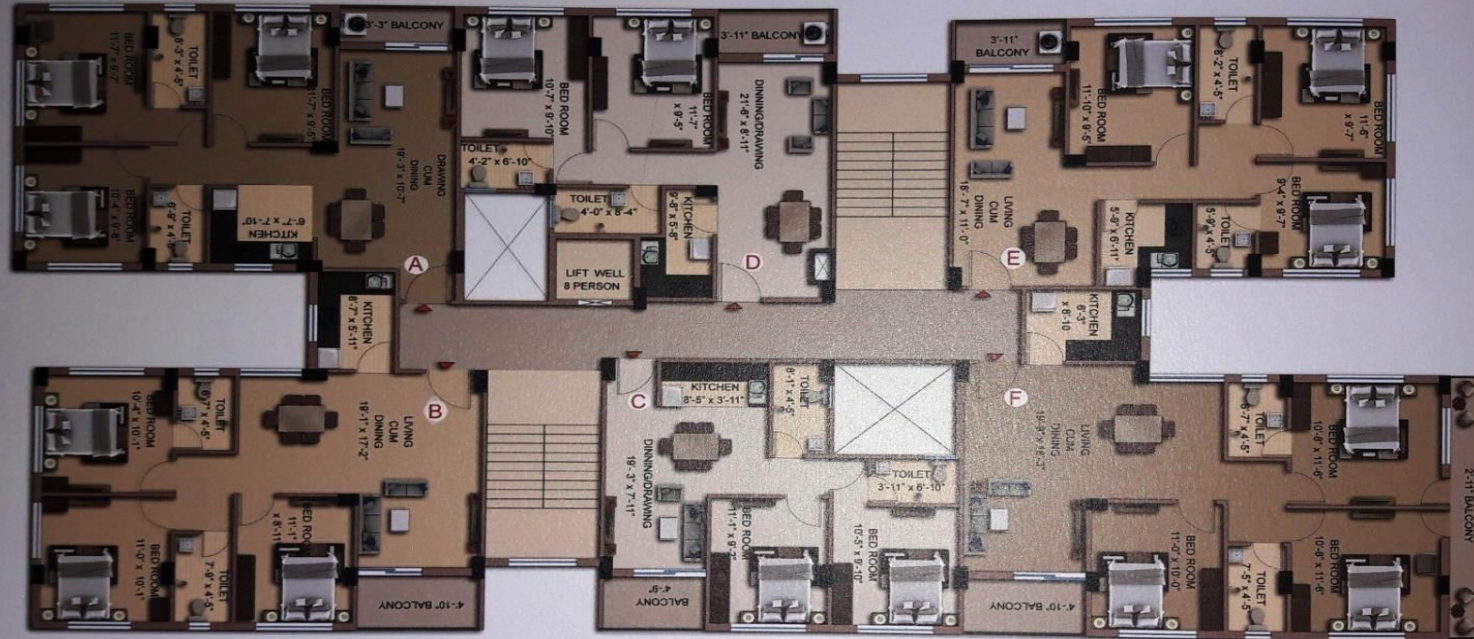


**9830788000**



# Block C

## BLOCK C

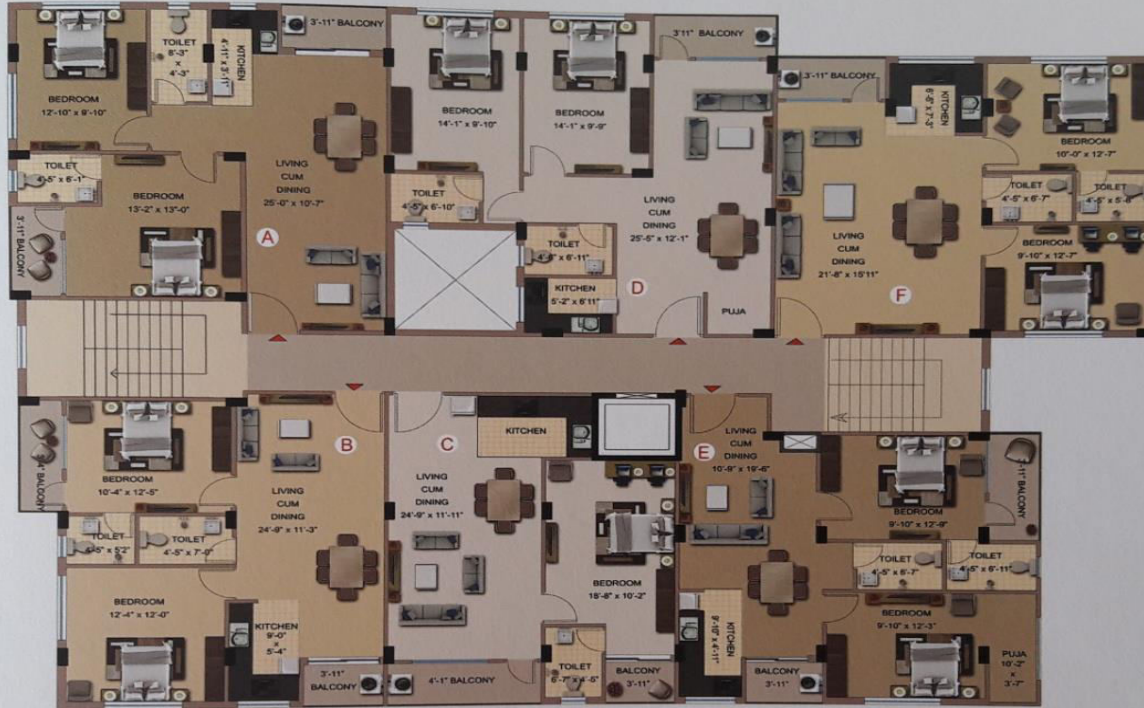


Flat Type	Unit Type	Saleable Area in Sq.Ft.	Build Up Area in Sq.Ft.	Balcony Carpet Are in Sq.Ft.	Carpet Are in Sq.Ft.
A	3BHK	1030	824	29	733
B	3BHK	1073	858	40	750
C	2BHK	742	594	35	522
D	2BHK	821	657	36	575
E	3BHK	972	777	34	686
F	3BHK	1255	1004	105	845



**9830788000**

## BLOCK D



Flat Type	Unit Type	Saleable Area in Sq.Ft.	Build Up Area in Sq.Ft.	Balcony Carpet Are in Sq.Ft.	Carpet Are in Sq.Ft.
A	2BHK	1018	814	62	702
B	2BHK	941	753	57	656
C	1BHK	788	630	68	539
D	2BHK	1001	801	38	720
E	2BHK	938	750	64	649
F	2BHK	972	777	33	698



**9830788000**





# Payment Schedule



<b>On Application</b>	<b>1,00,000/- + GST</b>
<b>Within 15 Days of Application (Less : Application)</b>	<b>20% + GST</b>
<b>On Completion of Foundation</b>	<b>10% + GST</b>
<b>On Completion of 1<sup>st</sup> Floor Roof Casting</b>	<b>10% + GST</b>
<b>On Completion of 2<sup>nd</sup> Floor Roof Casting</b>	<b>10% + GST</b>
<b>On Completion of 3<sup>rd</sup> Floor Roof Casting</b>	<b>10% + GST</b>
<b>On Completion of 4<sup>th</sup> Floor Roof Casting</b>	<b>10% + GST</b>
<b>On Completion of 5<sup>th</sup> Floor Roof Casting</b>	<b>10% + GST</b>
<b>On Completion of Brickwork</b>	<b>10% + GST</b>
<b>On Possession</b>	<b>10% + GST + Other Charges</b>

**9830788000**



# Thanking You

For any enquiries or Booking

Please call

**9830788000**