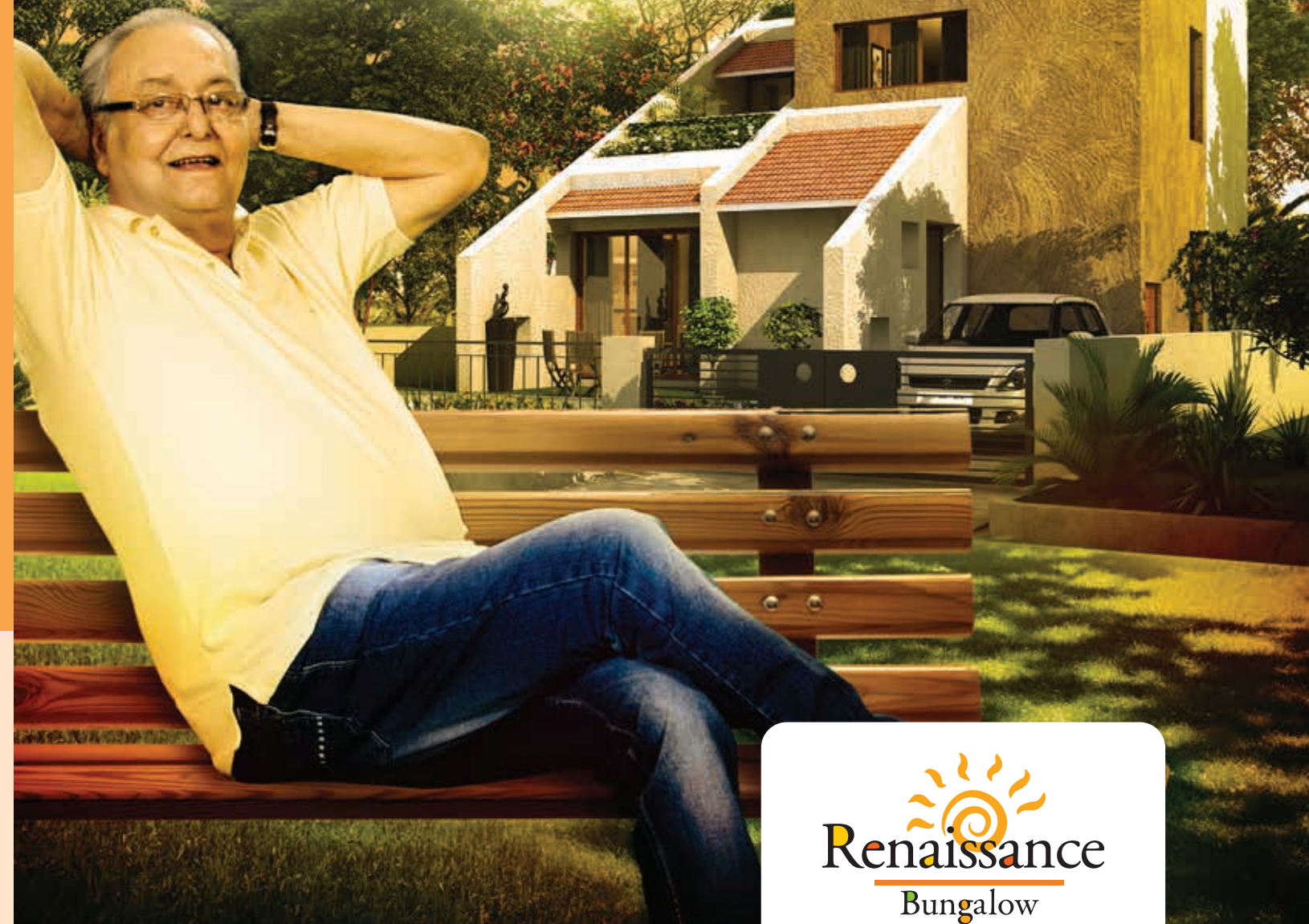




My  
home  
is my  
identity



**SITE ADDRESS**  
NH2, Burdwan, West Bengal 713102

**CORPORATE ADDRESS**  
Shrachi Tower  
686, Anandapur, EM Bypass, RB Connector Junction  
Kolkata - 700107

☎ 99038 29000 | E-mail: sales@shrachi.com



## A lifetime experience

'Renaissance', a talked about township in Burdwan is located on NH2. The township is spread over an area of 254 acre and consists of apartments, bungalows, twin houses and commercial/residential plots. It is an exclusive project with all possible facilities like shopping complex, resort, international school, hospital and daily need store. The township presents different residential projects like **Smart Homes**, **Nakshatra Heights**, **Nakshatra Eco** and **2,3 and 4 bhk Bungalows**. Luscious greenery encompasses the place and makes it a piece of heaven.



  
**Renaissance**<sup>®</sup>  
Township  
Aerial view

  
**Renaissance**  
Bungalow



- 90 min from Kolkata
- 254 Acres of Sprawling Township
- Shemford School
- Narayana School
- Burdwan Institute of Medical Science
- Commercial Complex
- Club Sinclairs
- Children's Play Area
- Banquet Hall





## Grandeur of Green

The vast open space makes the difference in living. Oppulent greenery gives the much needed relief from the hustle bustle of life. Jogging tracks, to experience a healthy state of mind and to stay fit. The exuberant ambience presents a wonderful lifestyle.

# Awesome Amenities



## Briddhi

A top notch shopping complex to make your life easy.



## Burdwan Institute of Medica Science

A state-of-the-art hospital for your medical need.

## Club Sinclairs

A premium resort spread over 4 acre of land. It has a multi-cuisine restaurant with star chef, 19 Premium suits and 1 Maharaja suite, library, badminton court, swimming pool, club and banquet hall.



## Shemford Futuristic School

A quality academic institution for your child's future.

## Narayana International School

An upcoming international school to make the future generation.

## Daily Need Store

A modern trade store, to provide all the daily needs.



# Location Map



- 90 min drive (110km) from Kolkata
- 15 min from Burdwan Railway Station
- 60 min from Andal Airport
- Opposite Uttara Bus Terminus
- On NH2

Abode with a difference



Bungalows are the most extravagant and premium residential project in Renaissance Township. The exuberant green and the serene environment give an experience of a vacation, whenever you come home.

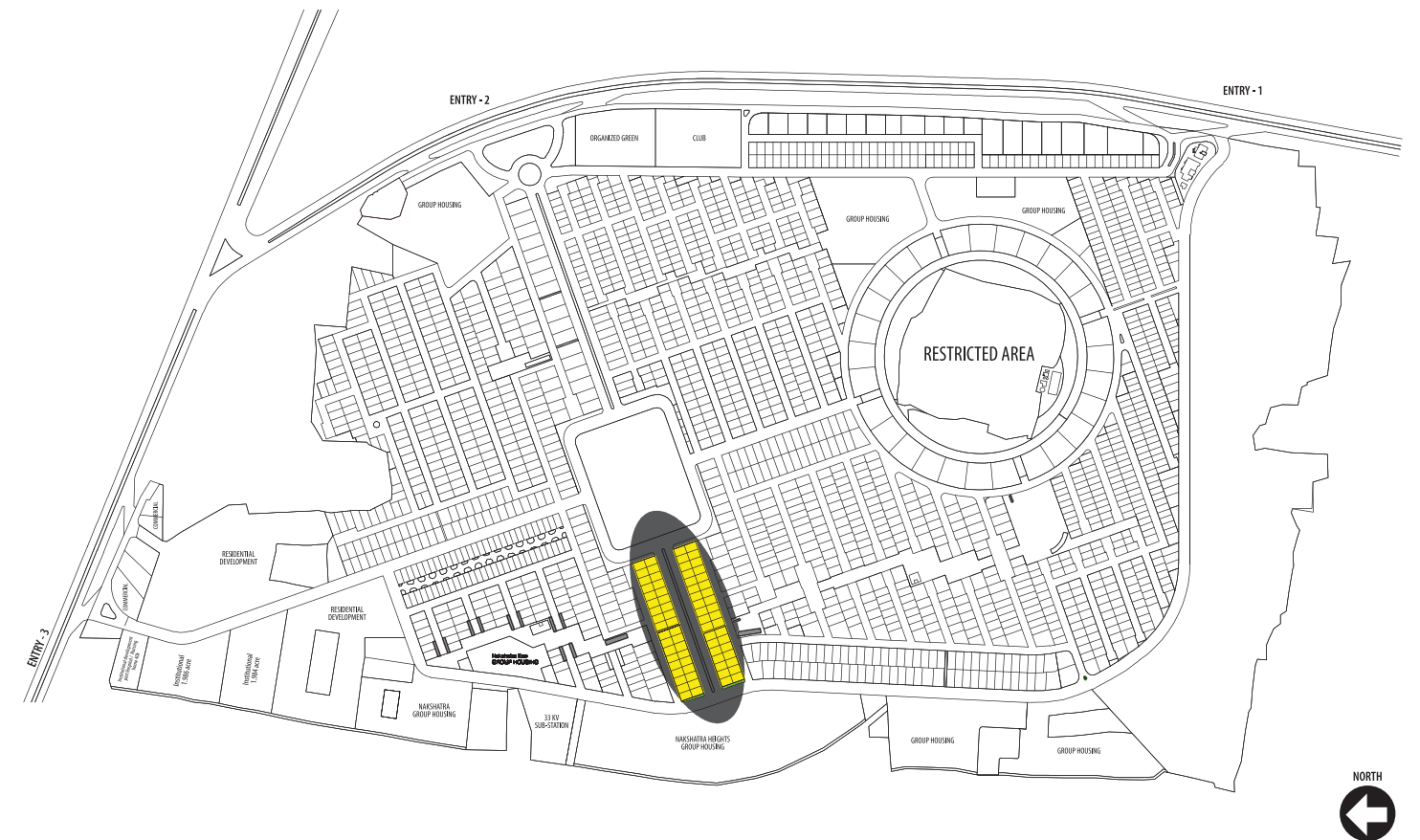
There are three types of bungalow- **Twin House (Dyuti)**, **3BHK (Antara)** and **4BHK (Malhar)**, to fit into your need. Comfort and luxury has been smartly fused in to give you the desired lifestyle.

# Master Plan of Twin House (Dyuti)

## SPECIFICATION

### Antara, Dyuti, Malhar

<b>Foundation</b>	RCC foundation
<b>Superstructure</b>	Partial Load bearing brick wall structure.
<b>Bedrooms</b>	
Floor	Vitrified tiles
Walls	POP
<b>Living/dining</b>	
Floor	Vitrified tiles
Walls	POP
<b>Kitchen</b>	
Floor	Vitrified tiles
Walls	Ceramic tiles
Counter	Granite
Sink	Stainless steel
<b>Toilet</b>	
Floor	Anti-skid ceramic tiles
Walls	Ceramic tiles
WC	Good quality EWC
Wash basin	Porcelain
Fittings	Good quality CP fittings
<b>Door</b>	
Window	Flush door
Stair railing	Powder coated aluminum.
External finish	MS stair railing with wooden hand rail. Weather coat painting over POP finish.
<b>Electrical</b>	Concealed wiring with modular switch.



Exterior view of Dyuti

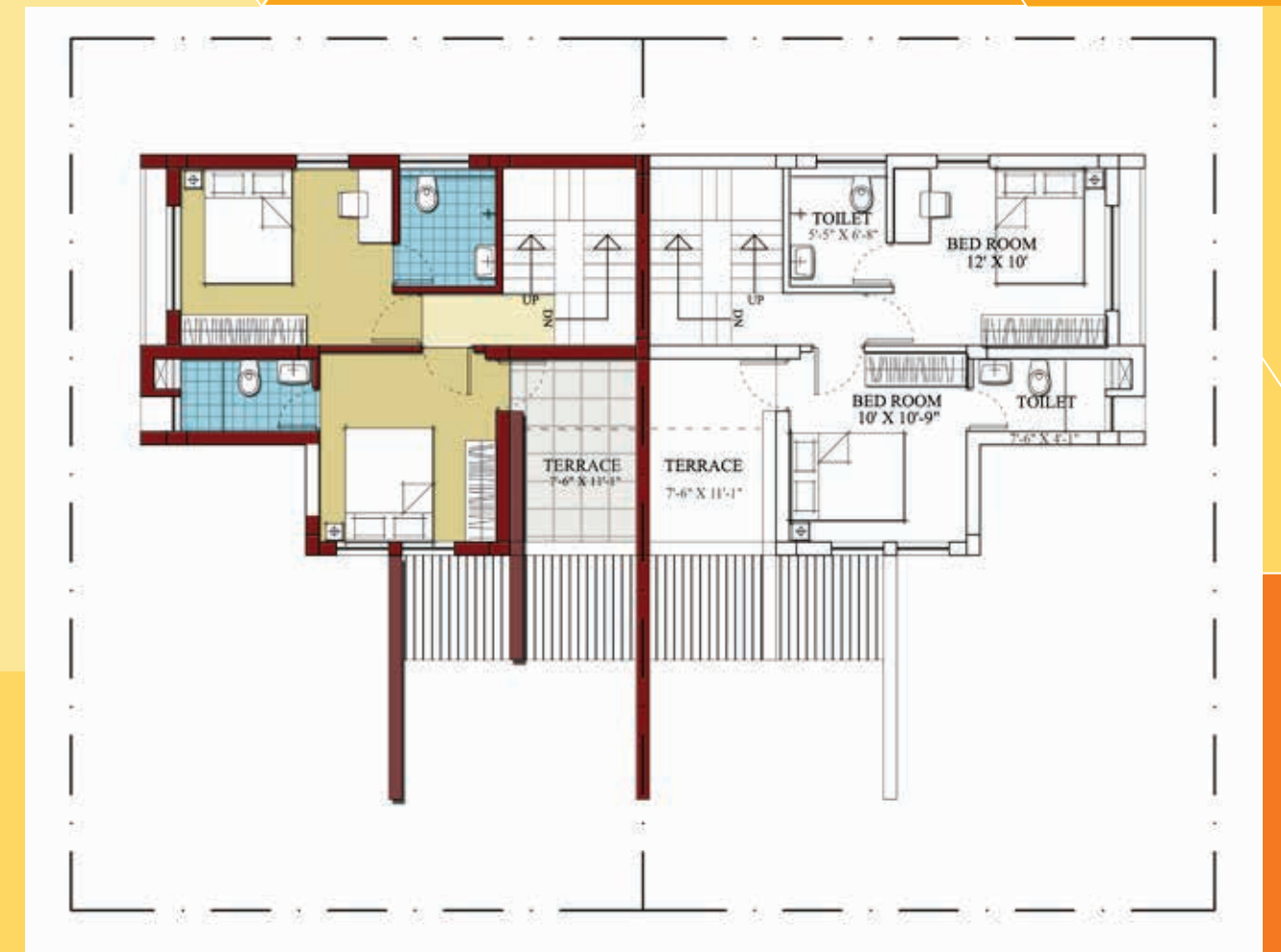


# New Bungalow Area details

## TWIN HOUSE (DYUTI)



TWIN HOUSE (GROUND FLOOR)



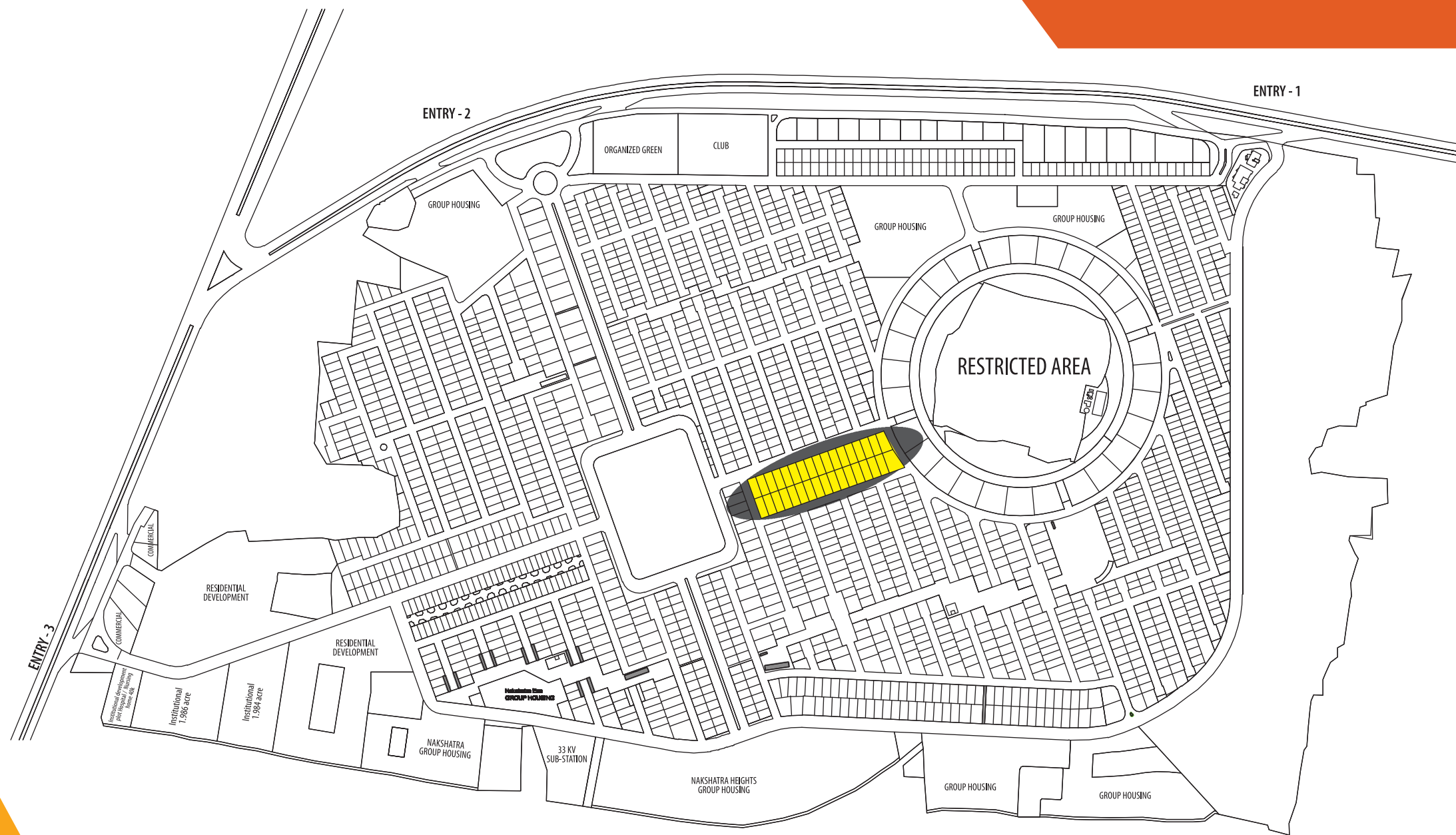
TWIN HOUSE (FIRST FLOOR)

Land Area	2.3 Kattah
Ground floor	56.15 Sqm.
1st floor	44.02 Sqm.
Wall	1.45 Sqm.
Terrace (50%)	3.88 Sqm.
Mumty room	8.65 Sqm.
<b>Total</b>	<b>114.2 Sqm. 1229 Sft.</b>



Interior views  
of Dyuti





# Master Plan of Antara & Malhar



Exterior view of Antara



Exterior view of Malhar

# New Bungalow Area details

## 3 BHK BUNGALOW (ANTARA)



3 BHK (GROUND FLOOR)

<b>Land Area</b>	<b>3.85 Kattah</b>	
Ground floor	58.32 Sqm.	
1st floor	49.08 Sqm.	
Wall	1.93 Sqm.	
Terrace (50%)	3.87 Sqm.	
Mumty room	9.29 Sqm.	
<b>Total</b>	<b>122.5 Sqm.</b>	<b>1318 Sft.</b>



3 BHK (FIRST FLOOR)



Interior views  
of Antara



Artist's impressions

# New Bungalow Area details

## 4 BHK BUNGALOW (MALHAR)



4 BHK (GROUND FLOOR)

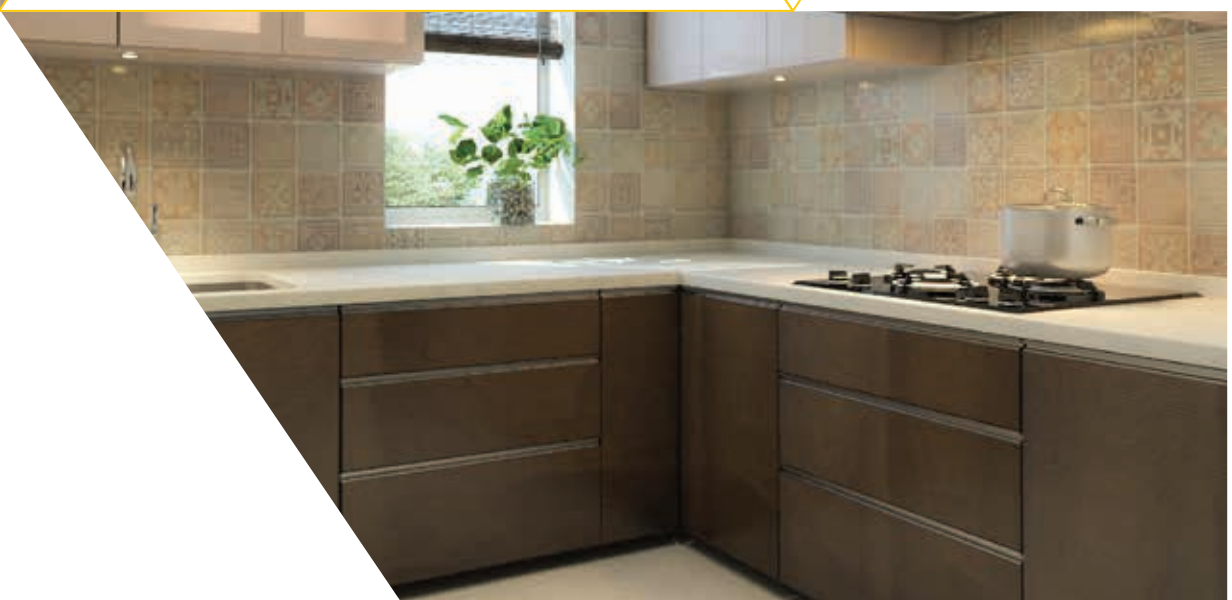
Land Area	3.85 Kattah
Ground floor	75.46 Sqm.
1st floor	55.86 Sqm.
Wall	2.69 Sqm.
Terrace (50%)	8.395 Sqm.
Mumty room	9.63 Sqm.
<b>Total</b>	<b>152 Sqm. 1637 Sft.</b>



4 BHK (FIRST FLOOR)



Interior views  
of Malhar



Artist's impressions



## When the two titans meet

“It was an illustrious experience for me, to visit the colossal Renaissance Township in Burdwan. I was really satisfied to witness the wide range of tailor-made residential projects, the opulent greenery and the modern-day amenities. I was quite overwhelmed to notice, that they have also recognised the importance of education and health in the township. Truly, Renaissance has set a new lifestyle in Burdwan.”

Soumitra Chatterjee