



LIFE IS...
...WHERE COMFORT IS
A Commercial & Residential Complex

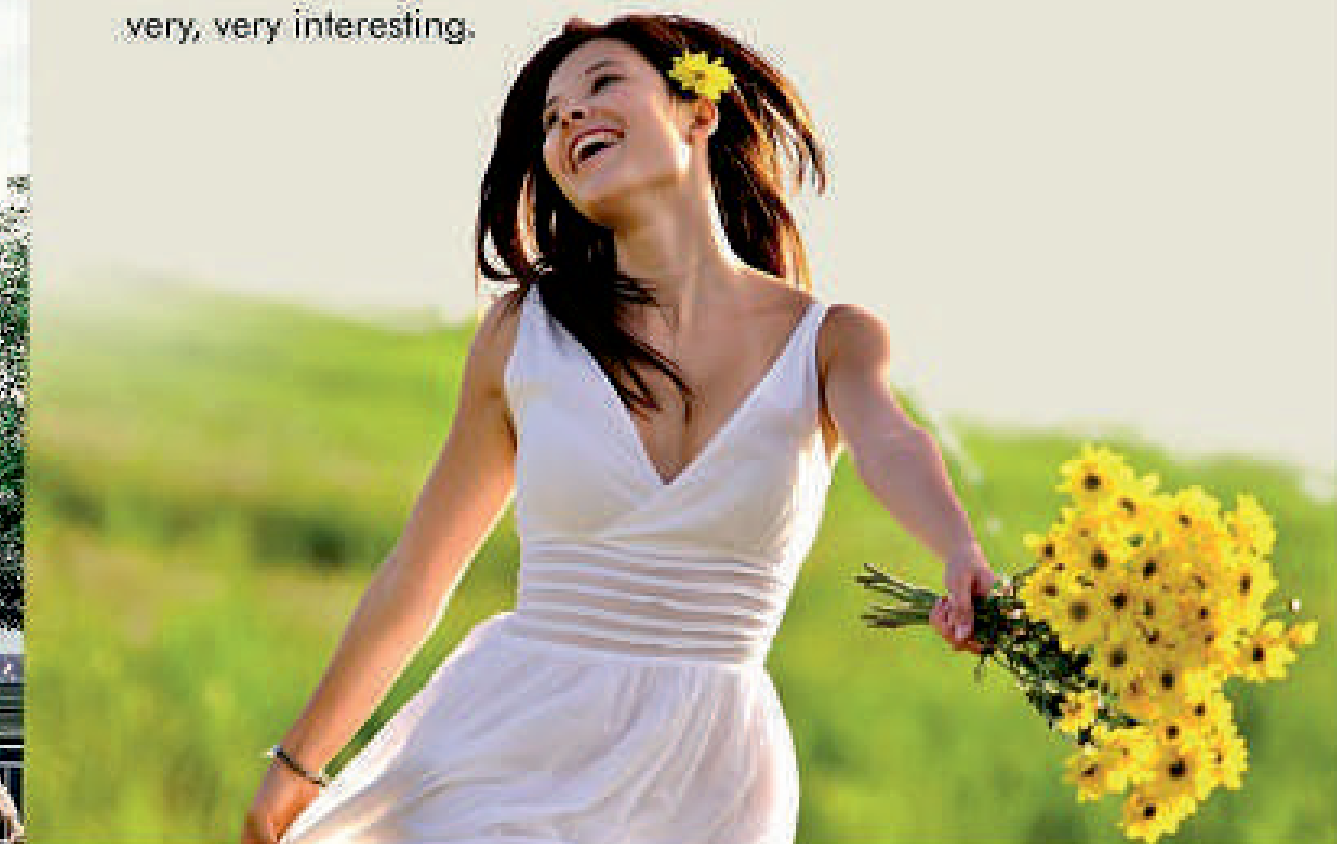




WELCOME... ...TO A WORLD OF COMFORT ZONE

You have worked hard, taken risks and made your life worth living: you have moved out of your difficult zones so that you could live your life & work in the right peaceful zone-in true style.

Barddhaman Lifestyle 5 is designed with commercial G+1 and residential 2nd to 6th floor having 2/3 side open, and built speciously to make your life easy, natural and...ummm... very, very interesting.





COMFORT IS... ...WHEN YOU ARE PROUD OF WHAT YOU OWN



Owning an office or apartment in Barddhaman Elita will make you feel proud - because everything about Barddhaman Elita is designed to reflect who you are - your success, your style, your high standards. Barddhaman Elita is made to be worthy of you in every respect, so that you can be proud of it, like your other achievements.



Living Room



- ▶ Prime Location
- ▶ Healthy Greenary
- ▶ Rooftop leisure
- ▶ Attractive elevation with brick type plaster
- ▶ Internal R.C.C. / Paved Road
- ▶ Exteriors chemically treated to prevent water seepage and to ensure that the building looks sparkling new for years to come



- ▶ Child-safe design - window grills, staircase railings etc. are designed keeping your children's safety a priority
- ▶ High-speed automatic Kone / equivalent elevator
- ▶ Ergonomically designed staircase for easy movement
- ▶ Maximum cross ventilation in all rooms
- ▶ Optimised planning giving you abundance of space
- ▶ Individual drinking water RO system



Bedroom



Executive Office



COMFORT IS... ...WHERE YOU FEEL CARED FOR

Barddhaman Elita exclusive Rooftop area gives cool spaces to do what you always wanted to do - Be at peace with yourself through meditation. Nurture good health. Pamper yourself at leisure zone after day long hard work. Take a brisk stroll & enjoy adda zone



Adda Zone

COMFORT IS... ...WHEN YOUR MIND IS AT PEACE

With the world becoming more complicated and stressful, the problems of assured services, safety & security and unnecessary conflicts are becoming a major concern for a peaceful & comfort living. Barddhaman Vista includes features that are designed to take of things that would not go wrong & putting your mind at ease, giving you assurance of great living.



Lobby



CCTV



Security



Fire Extinguisher



- ▶ Allotted car parking
- ▶ Surveillance cameras at strategic locations
- ▶ Multi-level 2 point security with CCTV and Smart Card access
- ▶ 500 VA DG power backup for continuous power supply



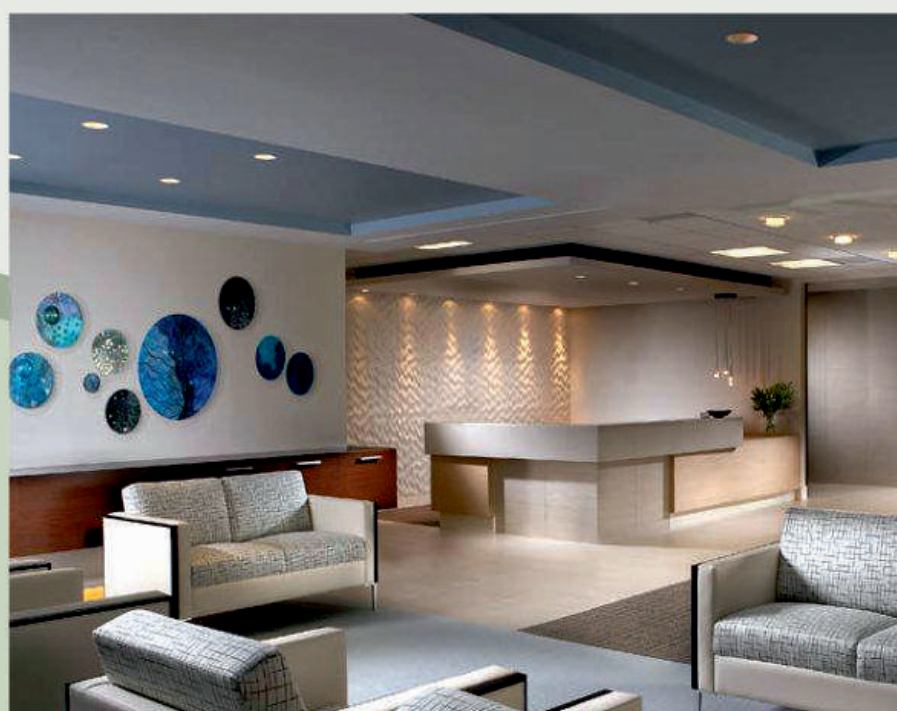
- ▶ Wi-fi hotspots for all residents within the premises
- ▶ Common satellite (Dish) TV for all residents
- ▶ Intercom facility for additional safety and security

- ▶ Spacious, well planned and user friendly kitchen having extra long granite platform
- ▶ Jaquar / equivalent bathroom fittings
- ▶ Designer tile elevation in all bathrooms for that touch of class

COMFORT IS... ...WHERE YOUR NEEDS ARE TAKEN CARE OF



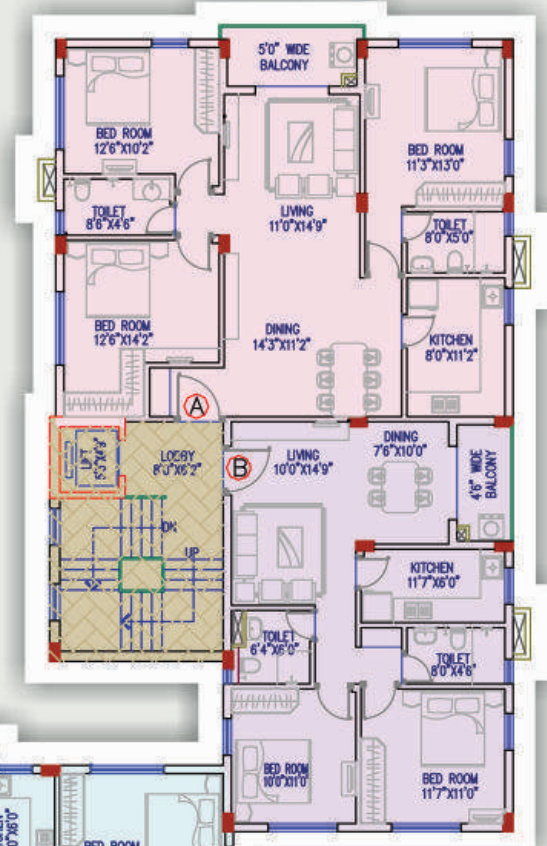
At Barddhaman Lifestyle 5, your requirements are meticulously taken care of. Inspired by a mother's concern for her child's needs, we have ensured that you get nothing less than the best, from all the basic amenities to a plush ambience.



Excellent Lobby



Ground Fl. Plan



2nd & 5th Fl. Plan



Saleable Area Chart

			Built up (Sq. ft.)	S.B.U. (Sq. ft.)
FIRST	A	3 BHK + 2 TOI.	1141	1518
	B	2 BHK + 2 TOI.	771	1026
2nd to 5th	A	3 BHK + 2 TOI.	1141	1518
	B	2 BHK + 2 TOI.	771	1026
	C	3 BHK + 2 TOI.	998	1327
	D	3 BHK + 2 TOI.	987	1313
	E	3 BHK + 2 TOI.	920	1223
	F	3 BHK + 2 TOI.	926	1231
	G	3 BHK + 2 TOI.	891	1184

Location Map



PAST PROJECTS



Bardhaman
Arcade



Bardhaman
Residency



Uttarapan



Natural
Heights

COMFORT IS... ...WHEN YOU KNOW YOU CAN TRUST



We are a dynamic and professional real estate developer with a focus on quality. We have a rich and varied experience of creating significant landmarks.

Customer satisfaction is our guiding force and we aim of aligning our processes with the needs of the customer...so that all we do revolves around what our customer's needs are. No wonder, satisfied customers are our biggest strength.

Our system driven approach helps us deliver what we promise. And foster the trust that the name Poddar Projects Ltd evokes.



To ensure customer delight by delivering value added superior quality products;
and building world-class, innovative & cost-effective spaces;
and thus become the most preferred Realty Company.



MAHALLA KESHABGANJ, NEAR RAILWAY STATION, BARDDHAMAN

Promoters:

PODDAR PROJECT LTD.

Poddar Court, 9th Floor, Gate No. 1
18, Rabindra Sarani, Kolkata-700001

Marketed by:



Ph: 9593118900, 9830411611, 9830180105

Email: sushil@gajpatihomes.in