



SOLIS
LIVE AMONG THE CLOUDS

WB HIRA REG. NO: HIRA/P/PUR/2019/000398 | <https://hira.wb.gov.in>

Artist's Impression

G + 15 Storey | Phase 1 (Towers 1 & 2)

Navigation Map



GRAND ROAD
 RING ROAD
 CENTRAL AVENUE (WEST)
 CENTRAL AVENUE (EAST)
 HIGH STREET

- Indicative graphical illustrations used for all properties
- Map is not to scale

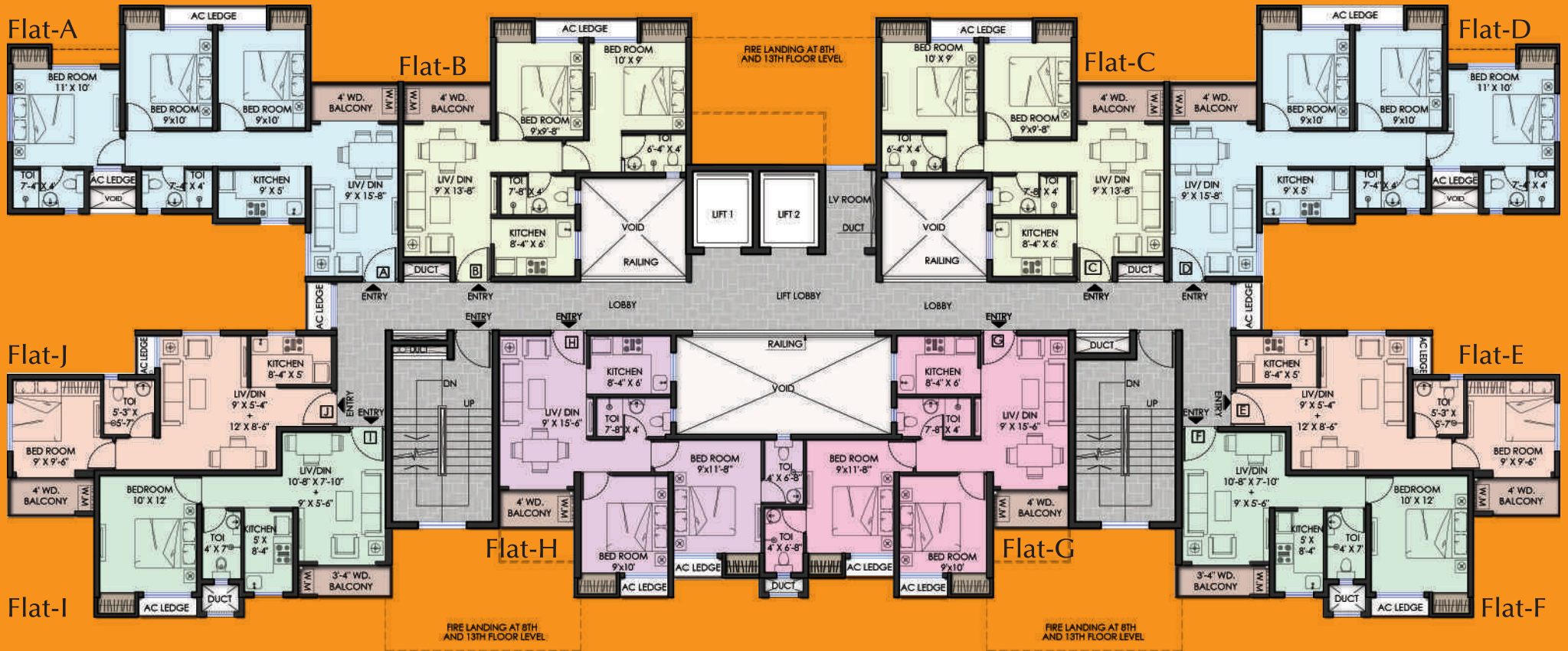
A Bardhaman reborn.

Welcome to the city of your dreams. A Bardhaman where nature soothes the eyes, blue skies are bathed in sunlight, and streets are free from obstacles.

Shrachi brings you a self-sufficient integrated satellite township spread across 250 acres with over 60% open area. An example of world class planning, Renaissance is truly a visual and architectural masterpiece. With over 1400 units handed over, it is the rebirth of a great city. A Bardhaman that Bardhaman deserves.



Floor Plan



Area Details - 1BHK

Type	SBUA(SFT)	BUA(SFT)	Carpet(SFT)
E, F, I, J	558	427	349

Area Details - 2BHK

Type	SBUA(SFT)	BUA(SFT)	Carpet(SFT)
B, C, G, H	755	577	490

Area Details - 3BHK

Type	SBUA(SFT)	BUA(SFT)	Carpet(SFT)
A & D	974	744	640

Note: All floors across all towers of Solis have a similar layout

SOLIS

LIVE AMONG THE CLOUDS

An eagle's view of a breathtaking horizon.
 A mellow sunset beyond the green meadows.
 Soft cottony clouds like they're touching your face.
 A vivid starry night outside your bedroom window.

G+15 towers.
 Ultra modern amenities.
 The tallest residential towers
 Bardhaman has ever seen.

Amenities of Renaissance Township

Narayana International School | Shemford Futuristic School
 Burdwan Institute of Medical Science | Central Sewage Treatment Plant
 Gated Community | 24*7 Electricity | Swimming Pool | 24*7 Security
 Briddhi Shopping Complex | Multi-cuisine Restaurant | Yoga Centre
 Jogging Track | Club Sinclairs | Landscaped Gardens



Actual Image



Actual Image



Actual Image



Actual Image



Actual Image



Actual Image

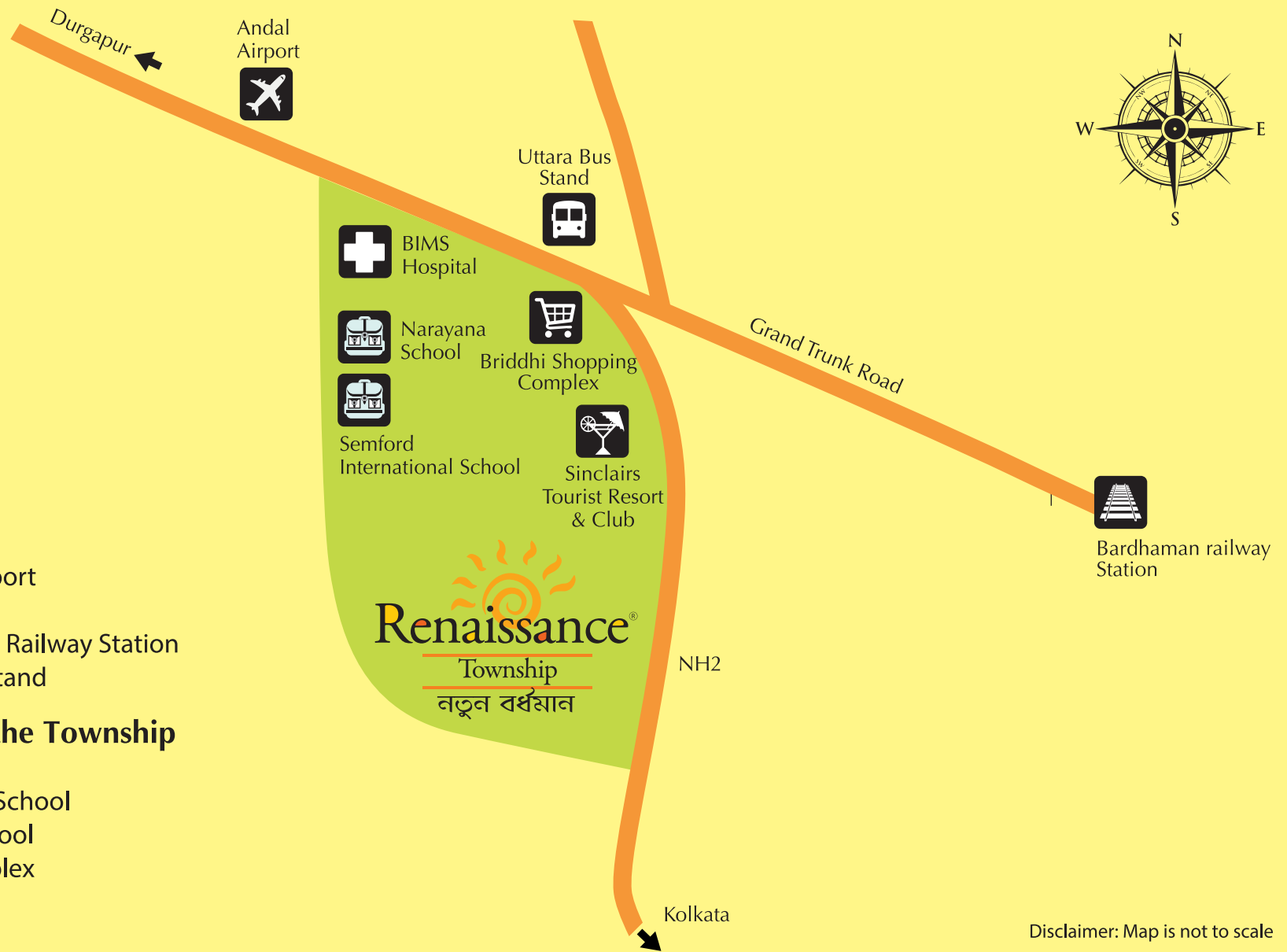
Exclusive Amenities of Solis

Ground Floor Parking | Outdoor Gym | Party Lawn | Children's Play Area
 Open-air Theatre

Life at Renaissance



Actual Image



Connectivity

- 90 mins from Kolkata
- 75 mins from Andal Airport
- 45 mins from Durgapur
- 7 mins from Bardhaman Railway Station
- 1 min from Uttara Bus Stand

Live amenities within the Township

- BIMS Hospital
- Narayana International School
- Shemford Futuristic School
- Briddhi Shopping Complex
- Club Sinclairs



Corporate Office:

Shrachi Tower, 686, Anandapur, E.M. Bypass Junction, Kolkata 700 107
 Contact: 99038 29000, 033 4984 4984
 Email: sales@shrachi.com | Website: www.shrachibardhaman.com

Marketed by



Disclaimer: Map is not to scale

Disclaimer: This handout does not purport to be a legal document. Plans and specifications may change at any point of time.